

Waikanae School

Reading Age Comparisons via Running Record

March-April 2018



About this Assessment Tool

The achievement data collated in the following graphs has been collected by way of one on one Running Records. The Running Record is a relatively 'soft' assessment tool that relies on the teacher's observations and interpretation of a student's reading ability in both decoding and comprehension. It is highly effective and widely used throughout the Junior School. It is primarily a diagnostic tool for the teaching of reading and its use tends to tail off as students become proficient readers (reading age of 12 years plus).

It is important to note that there are no 'Overtime' comparison due to changes in the timing of the collection of data and the manner in which the data has been analysed,

The information given is based on the following

Well Below = A 'Reading Age' that is 12 months or more below a student's chronological age.

Below = A 'Reading Age' that is between 1 month and 11 months below a student's chronological age.

At = A 'Reading Age' that is between 0 months and 11 months above a student's chronological age.

Above = A 'Reading Age' that is 12 months or more above a student's chronological age.

Rates of progress are measured in 3 month chunks. This enables us to track the progress of cohorts of students against both the national expectation as well as other cohorts of interest within our school. Importantly in order for this to happen students **must** have undertaken the assessment twice so that the differential can be calculated and progress of individuals and cohorts can then be analysed.

Description of Student Cohort Groupings

Category	Number of Students in Cohort Group	Percentage of Test Group	Description
All	433	100.0%	All students who were enrolled at 31 March 2018 less any New Entrants and those who were not assessed.
Asian	20	4.6%	This category includes all students identified upon enrolment as being Chinese, Malay etc.
Maori	88	20.3%	All students identified upon enrolment as Maori
MELAA	10	2.8%	This category includes all students identified upon enrolment as being Middle Eastern, Latin American or American
New Zealand European	304	70.2%	All students identified upon enrolment as New Zealand European
Pacific Peoples	11	2.5%	This category includes all students identified upon enrolment as being Samoan, Fijian, Cook Island Maori etc.
Target Maori 2017	55	12.7%	The Maori Target Cohort is all students recorded/enrolled as Maori on 31 December 2016
Target Pacific Island 2017	8	1.8%	The Pacific Island Target Cohort is all students recorded/enrolled as Pacific Islanders on 31 December 2016
Target Reading 2017	48	11.0%	The Year Group Target Cohorts are all the students in each year group that were judged as being <i>Below the National Standard</i> in reading on 31 December 2016
Boys	228	53.0%	All students identified upon enrolment as being male.
Girls	205	47.0%	All students identified upon enrolment as being female.

2018 Running Record Achievement Summary

Performance by Year Group and Gender Cohorts

- By Year 8 there are 64% of students reading At or Above their chronological age.
- There is no variation of note between the genders.
- The Year 2 cohort is the poorest performing cohort with 61% reading Well Below or Below their chronological age.
- The percentage of students reading Well Below their chronological age tends to increase through the year groups. Students not succeeding in reading become more apparent as they get older.

Performance by Ethnicity Cohorts

- 54% of Maori are reading At or Above their chronological age. This is lower than NZ European by 10%.
- Pacific Peoples are the poorest performing cohort with only 33% of students reading At or Above their chronological age. There are only 11 students in this cohort. 8 of these students are in Years 1 to 4 and are relatively recent immigrants with English being their second language. These 8 students have received or are receiving supplementary support in the form of ESOL Reading programmes.

Performance Overtime

- There are no overtime comparisons for 2015-2016-2017 due to variations in how the data has been collected and analysed.

Performance Target Group as per 2017 Charter

The 'Targets Graphs' make interesting reading.

- The Maori Target Group met the 2017 Charter Target with an average of 12 months' progress being made in the 12-month period.
- The Pacific Peoples Target Group also met the 2017 Charter Target. Both of the 2 students who made 12 or more months' progress also made accelerated progress of 18 months in the 12 period.
- The Year Group Target Groups all made progress. Students in middle cohorts tended to make more progress especially Years 4 and 6. The Year4 cohort (containing 3 students) made an average of 18 months' progress

- Of the 47 Year Group Reading Target students who undertook both assessments 25 made 12 months' progress and of these 11 made accelerated progress of 18 months or more.
- 8 of the 47 Year Group Reading Target students are now Reading At or Above their chronological age.

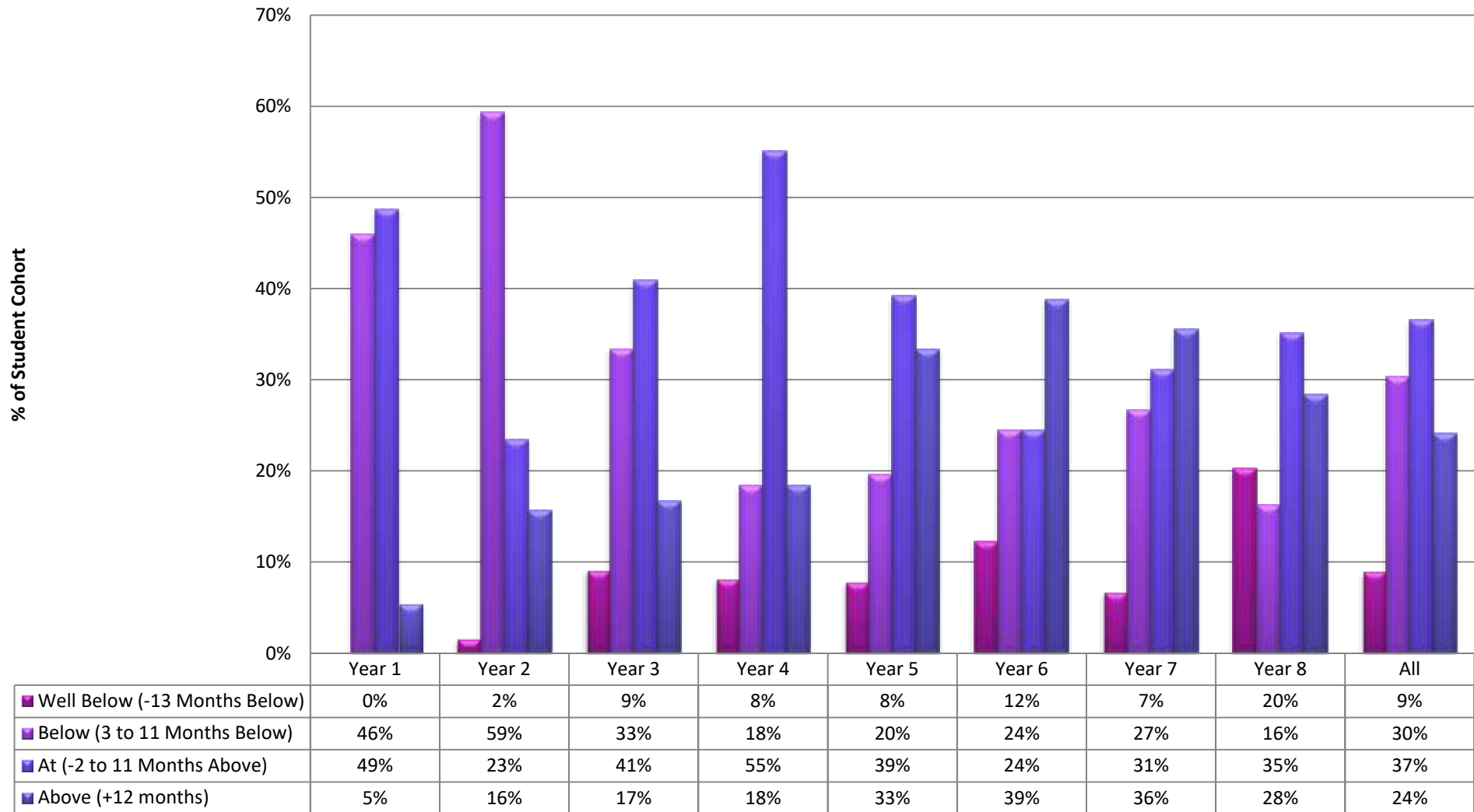
Performance of Students Reading 'Well Below or Below'

- Many of 47 students reading in excess of 11 months below their chronological age have received or are receiving additional learning support. In many cases, this support has been intensive and has been delivered over a number of years.

Running Record Reading Age

Reading Age V Chronological Age by Year Group

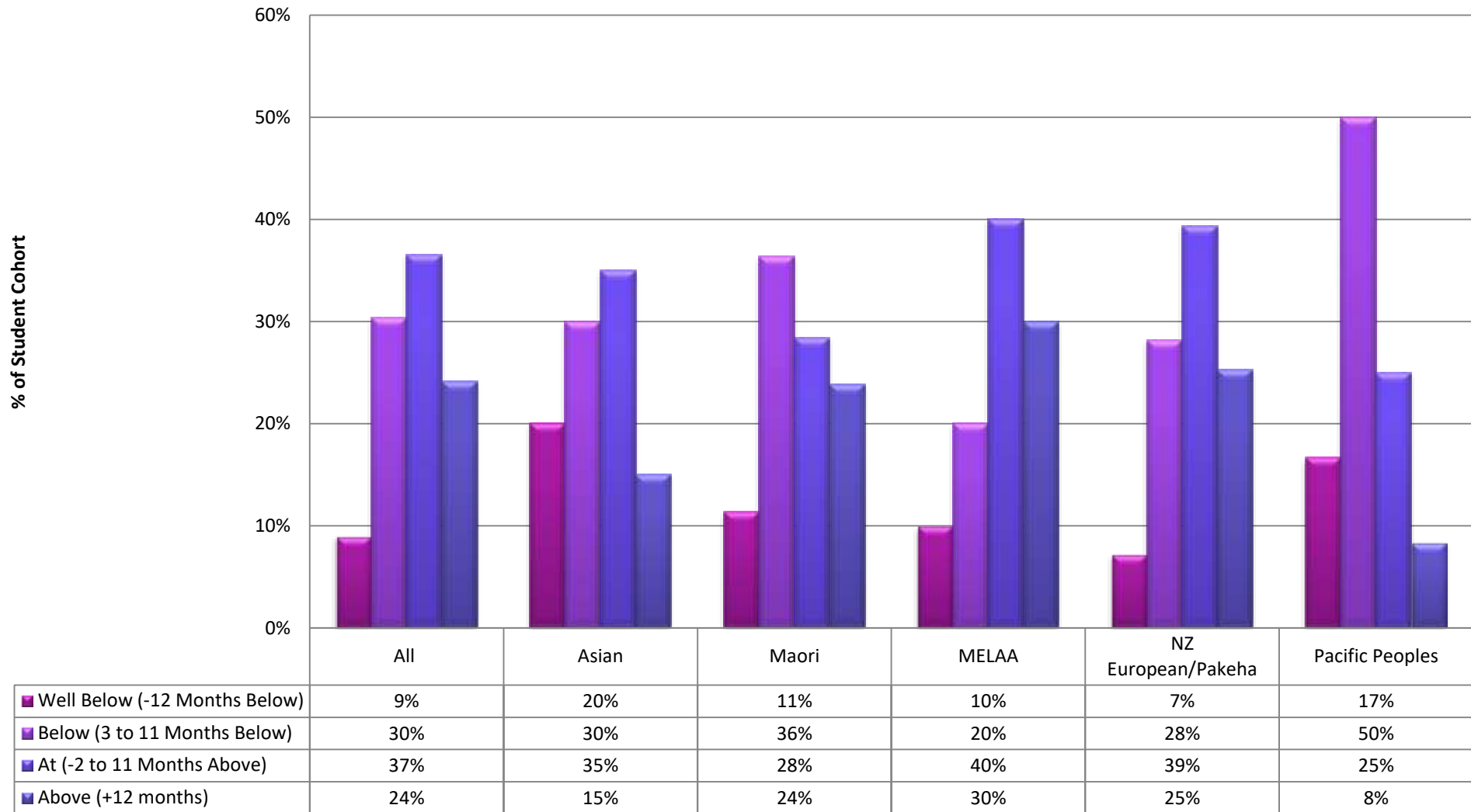
Using net difference in Months between Reading Age and Chronological Age
April 2018



Running Record Reading Age

Reading Age V Chronological Age by Ethnicity

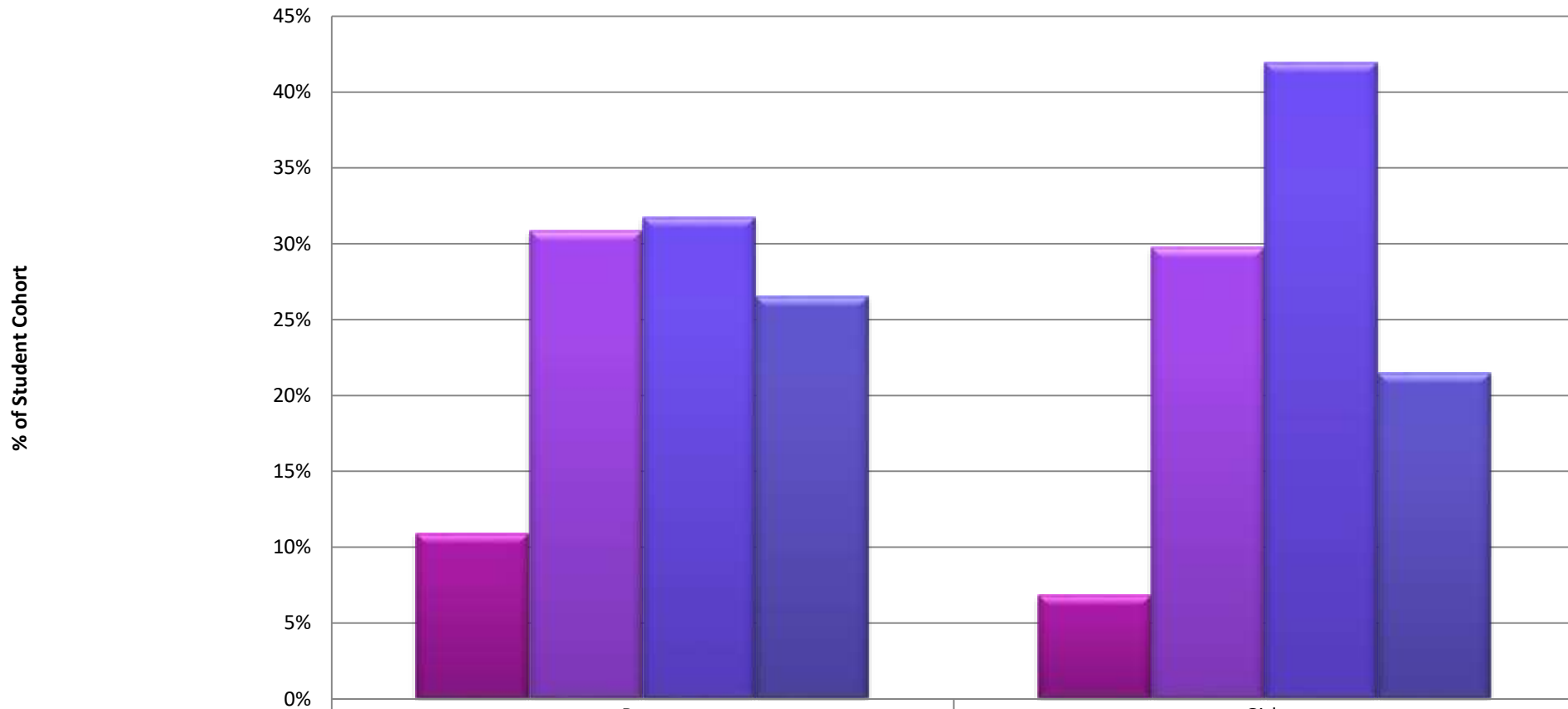
Using net difference in Months between Reading Age and Chronological Age
March 2018



Running Record Reading Age

Reading Age V Chronological Age by Gender

Using net difference in Months between Reading Age and Chronological Age
March 2018



Well Below (-12 Months Below)
Below (3 to 11 Months Below)
At (-2 to 11 Months Above)
Above (+12 months)

Boys

11%
31%
32%
27%

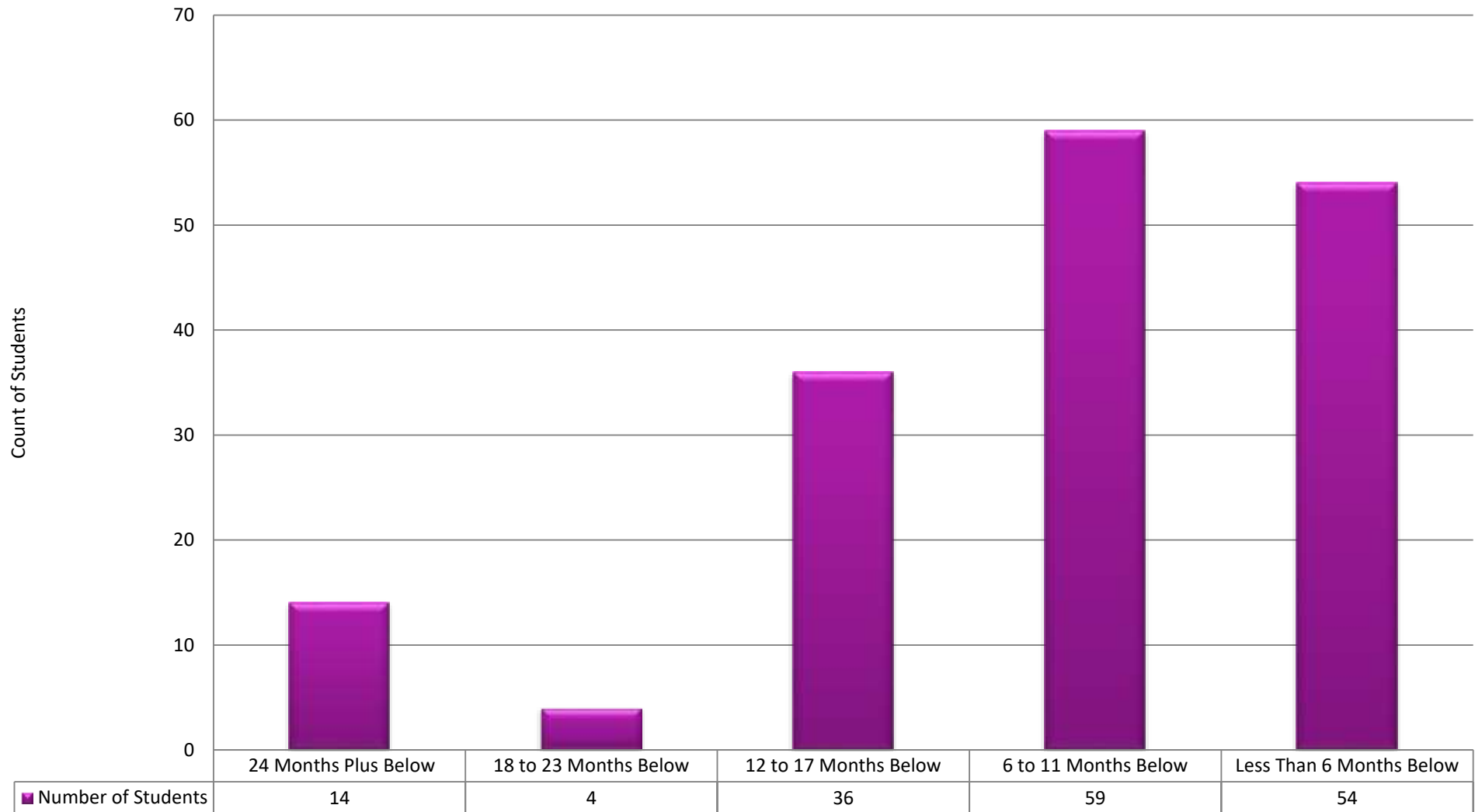
Girls

7%
30%
42%
21%

Running Record Reading Age

Months of Reading Age Below Chronological Age Whole School 2018

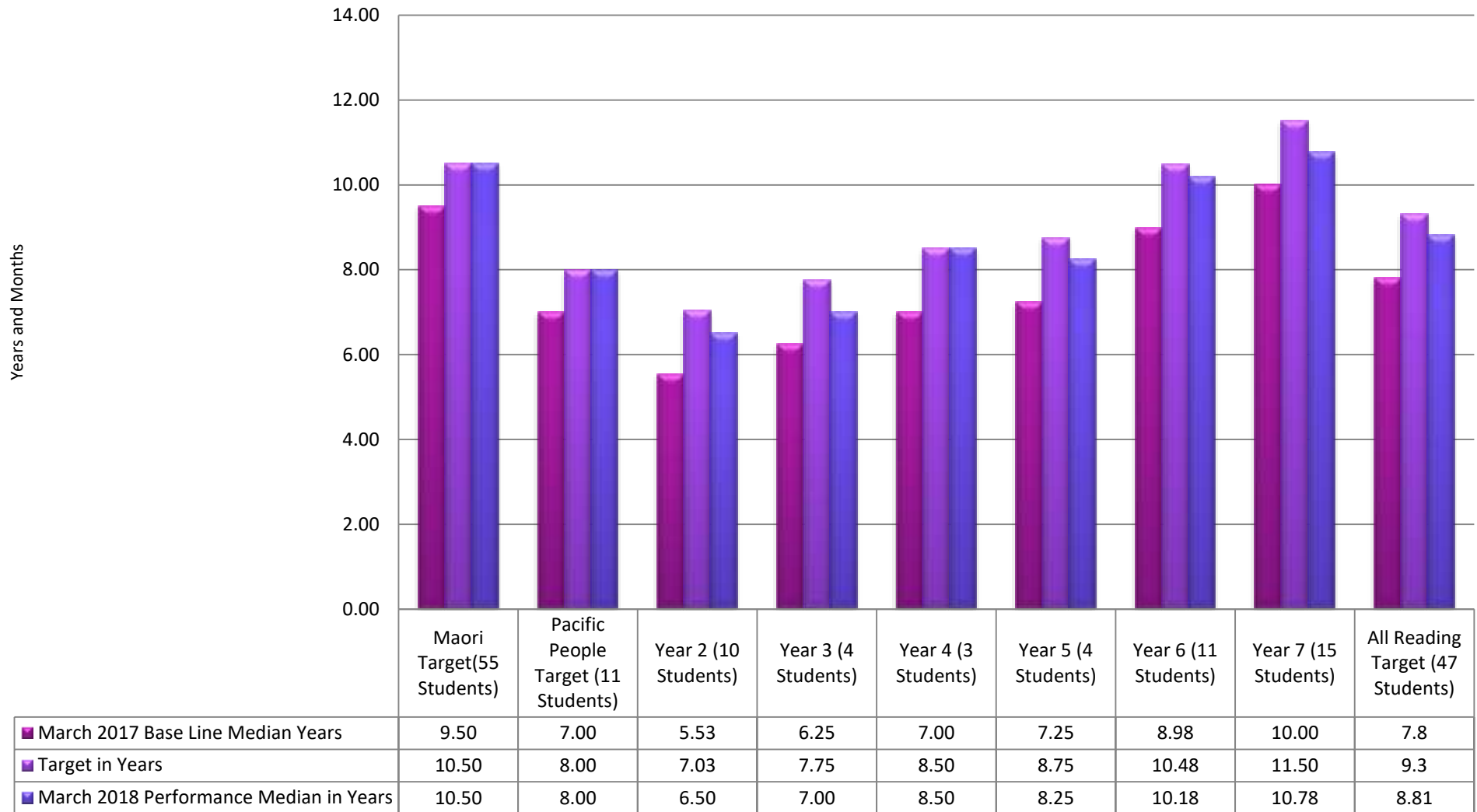
This Graph gives a break down in 6 month cohorts of the 171 students identified as performing below their chronological age



Running Record Reading Age

Baseline 2017 V Target 2017 V Performance 2018

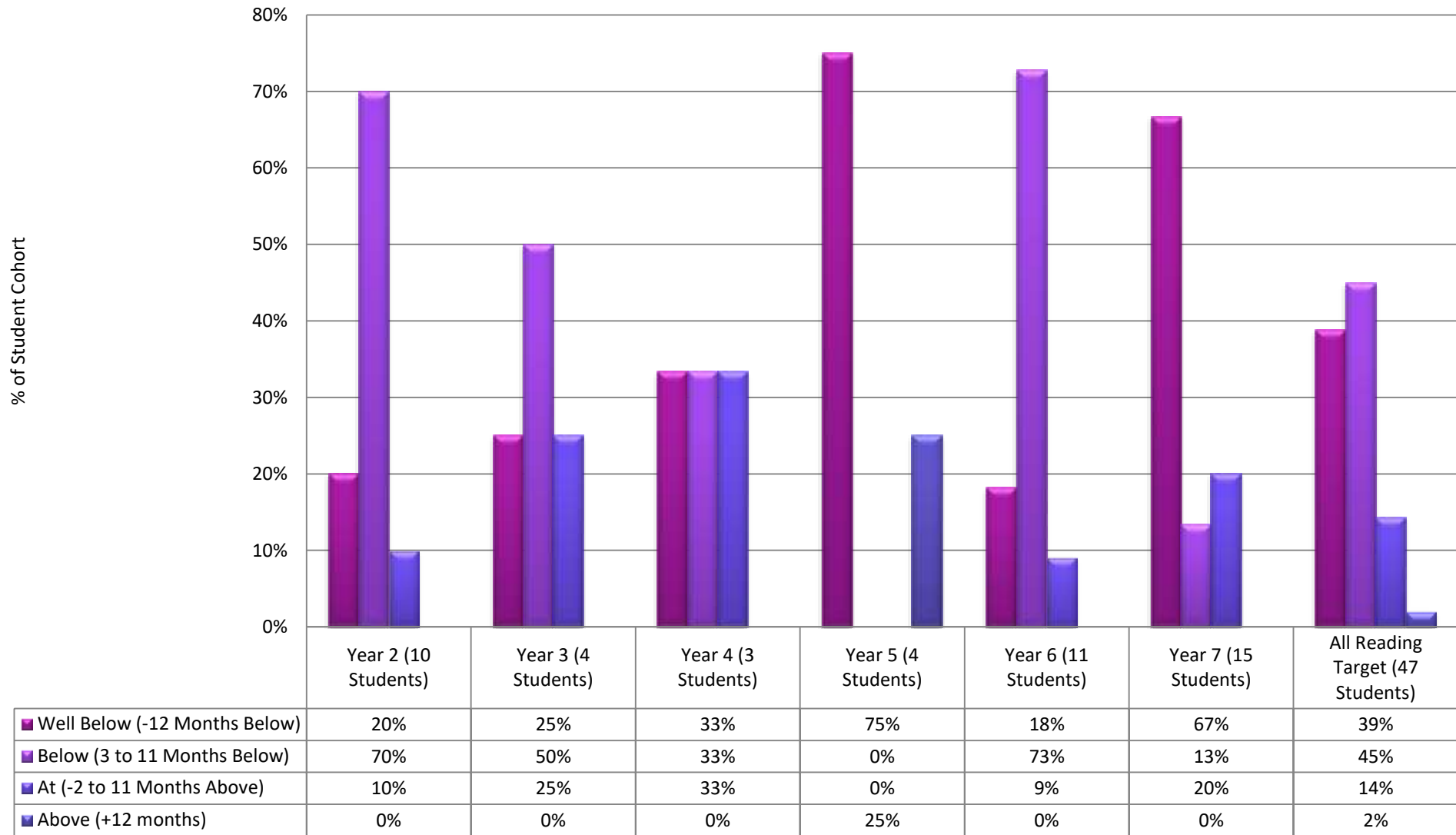
Progress by Median Reading Age by Years and Months



Running Record Reading Age

Reading Age by 2017 Year Group Target

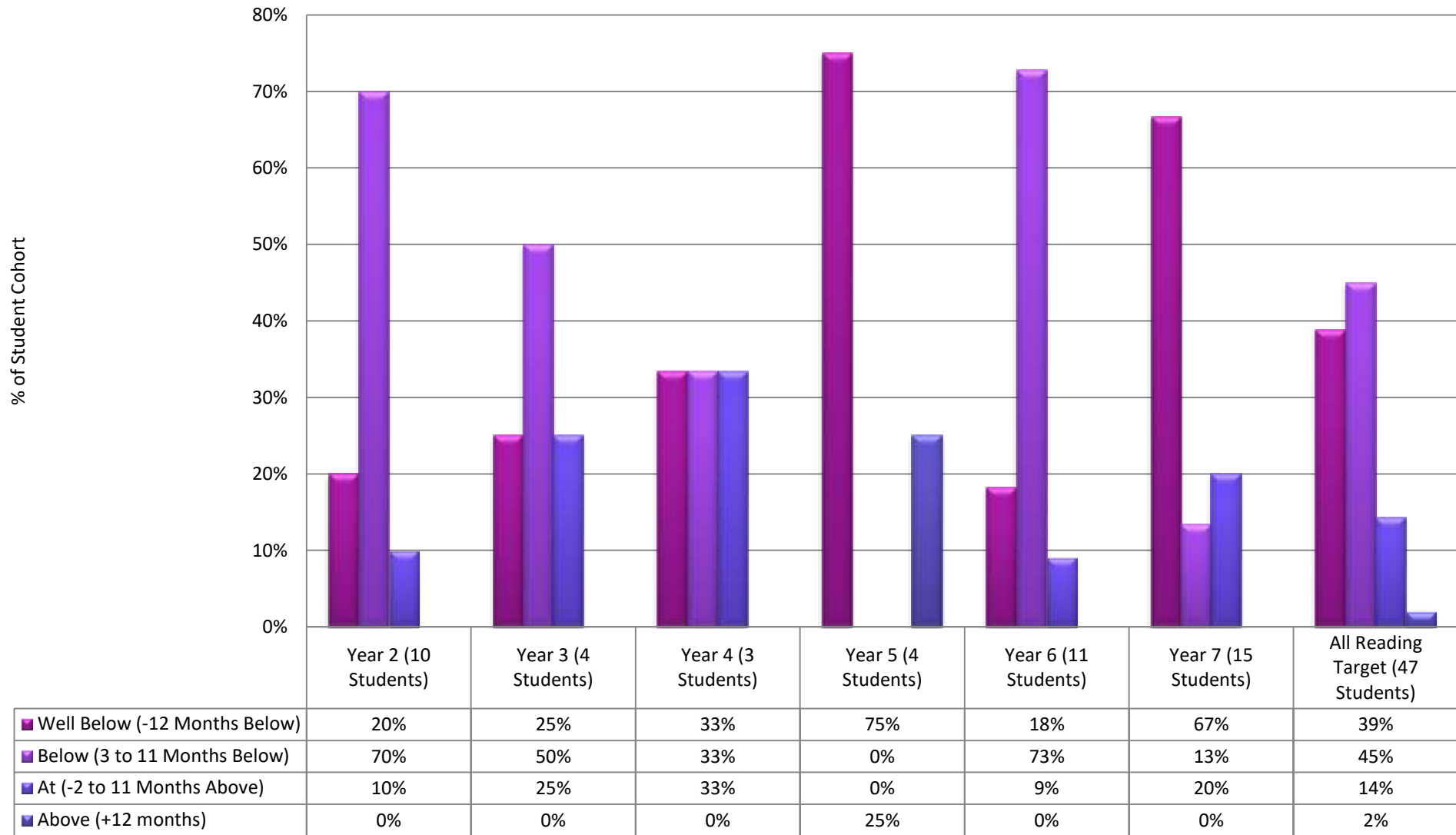
% of students Well Below, Below, At, Above for March 2018



Running Record Reading Age

Reading Age by 2017 Year Group Target

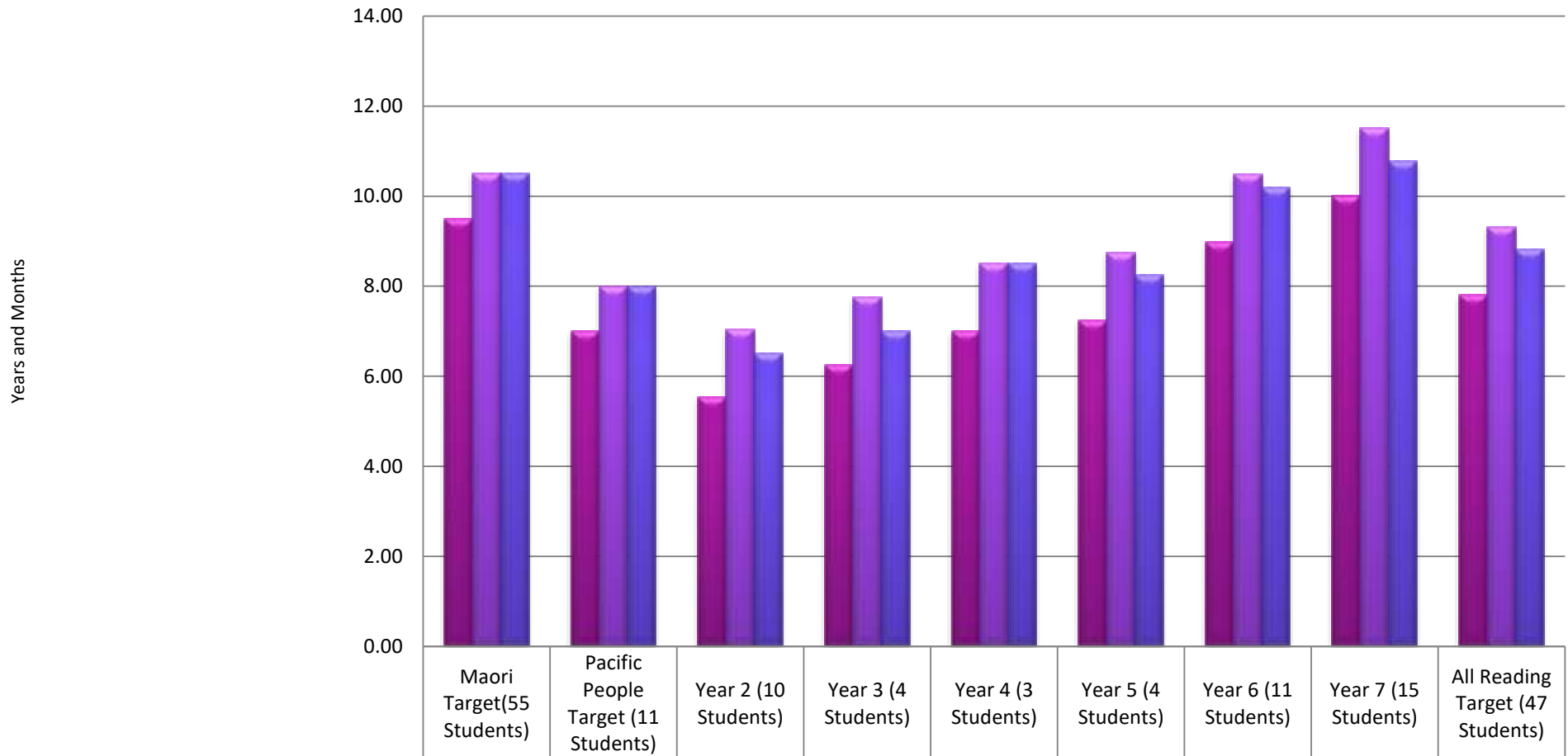
% of students Well Below, Below, At, Above for March 2018



Running Record Reading Age

Baseline 2017 V Target 2017 V Performance 2018

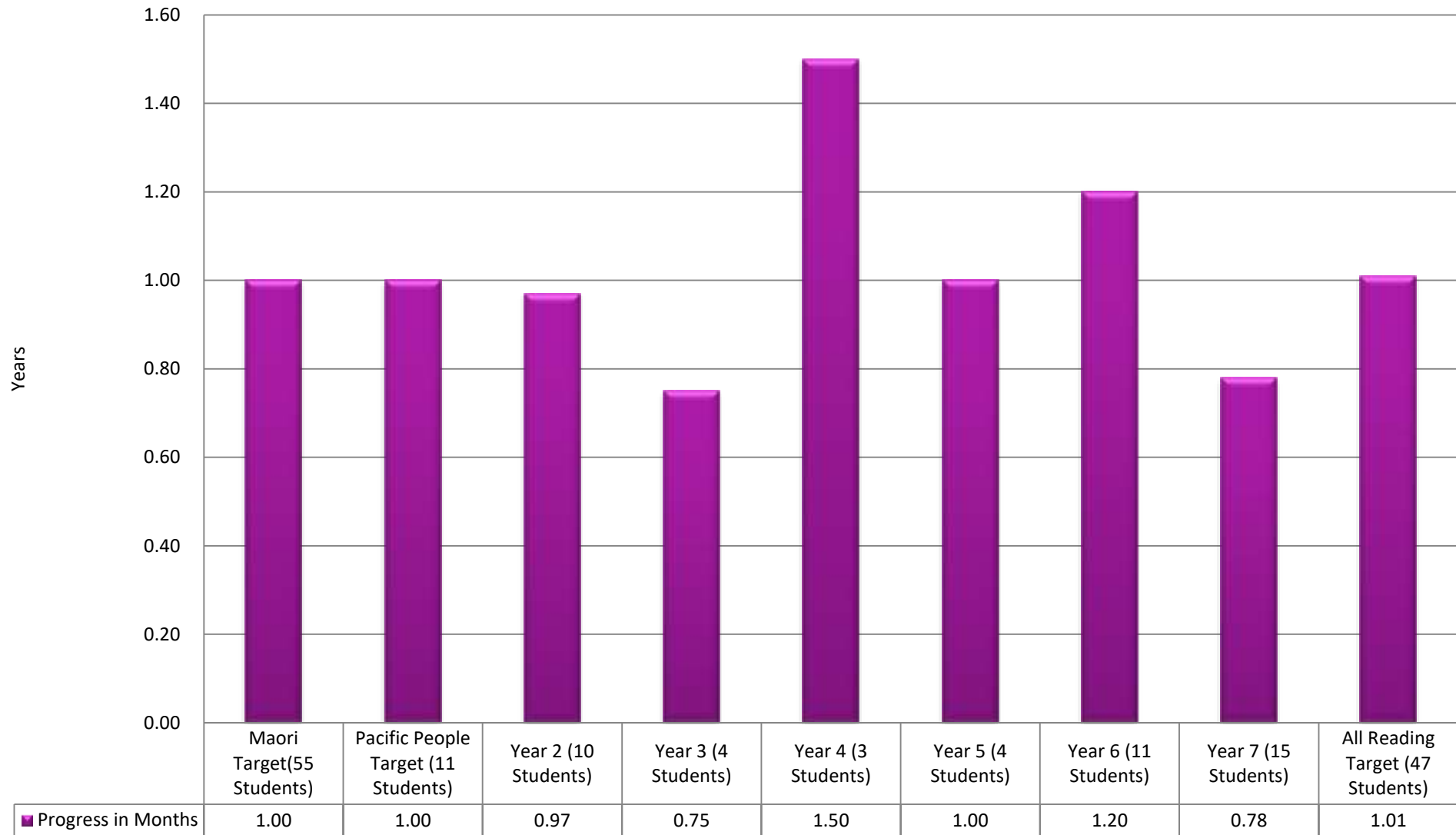
Progress by Median Reading Age by Years and Months



Running Record Reading Age

2017 Target Group Progress

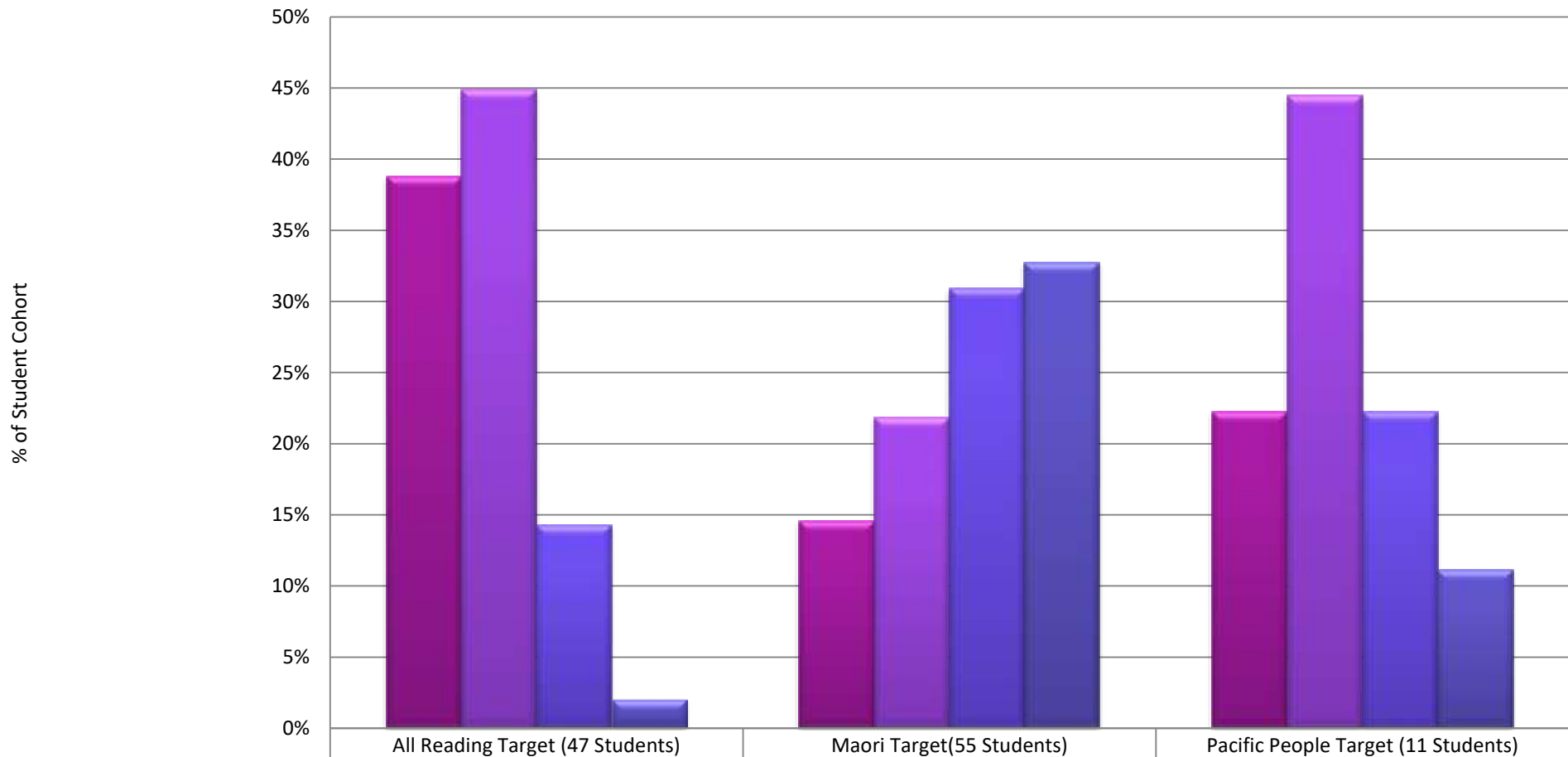
Net Progress of Median in Years for 12 month period ending March 2018



Running Record Reading Age

Reading Age by 2017 Whole Target Groups

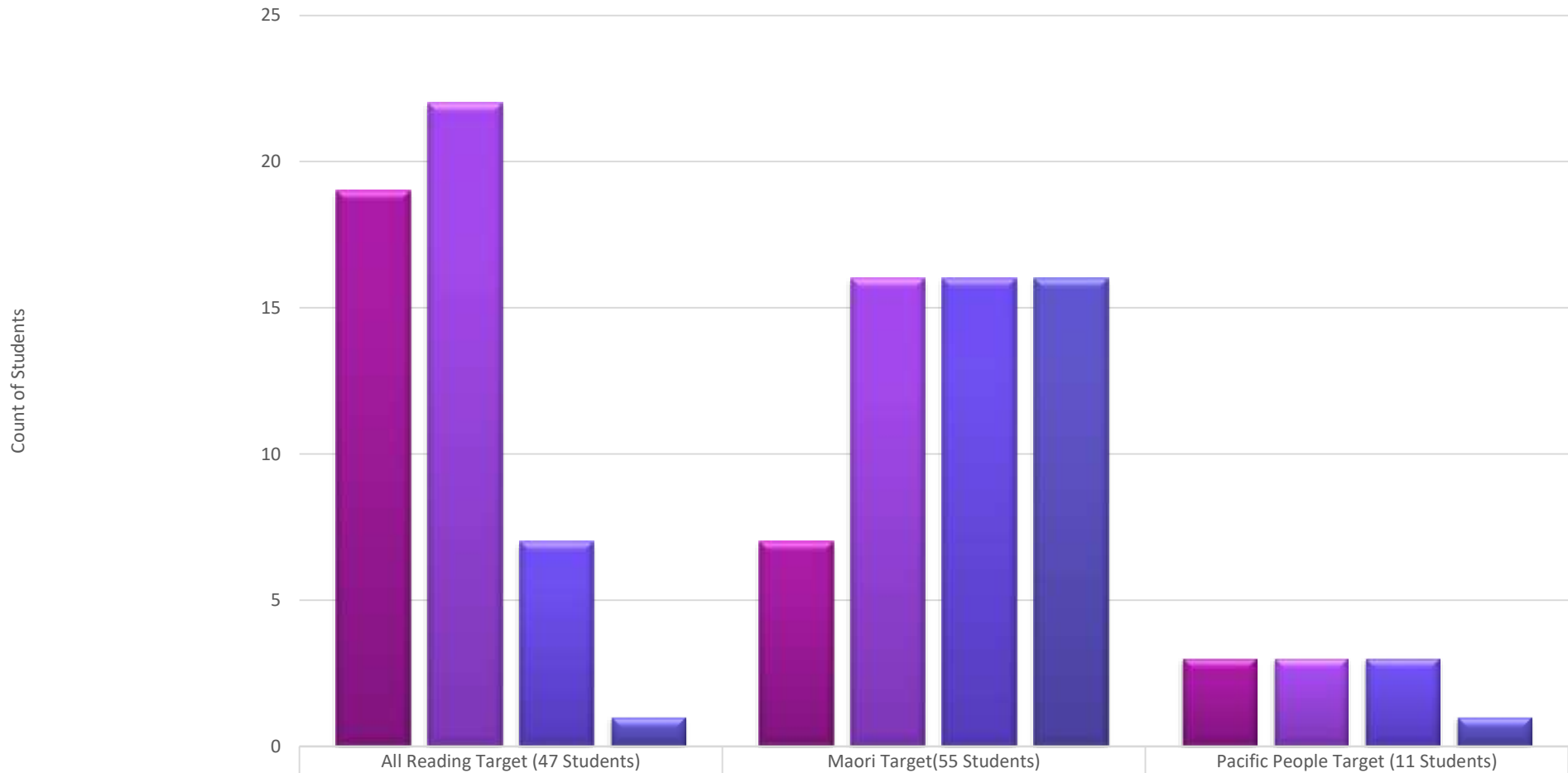
% of students Well Below, Below, At, Above for March 2018



Running Record Reading Age

Reading Age by 2017 Whole Target Groups

Count of students Well Below, Below, At, Above for March 2018



	All Reading Target (47 Students)	Maori Target (55 Students)	Pacific People Target (11 Students)
Well Below (-12 Months Below)	19	7	3
Below (3 to 11 Months Below)	22	16	3
At (-2 to 11 Months Above)	7	16	3
Above (+12 months)	1	16	1