

WAIKANAE SCHOOL

WHAT MAKES US WHO WE ARE?



What are our values?



TEACHERS AT WAIKANAE SCHOOL HAVE HIGH STANDARDS TO SET!



we are a talented bunch of individuals!

WHAT ARE YOUR VALUES AS A TEACHER?

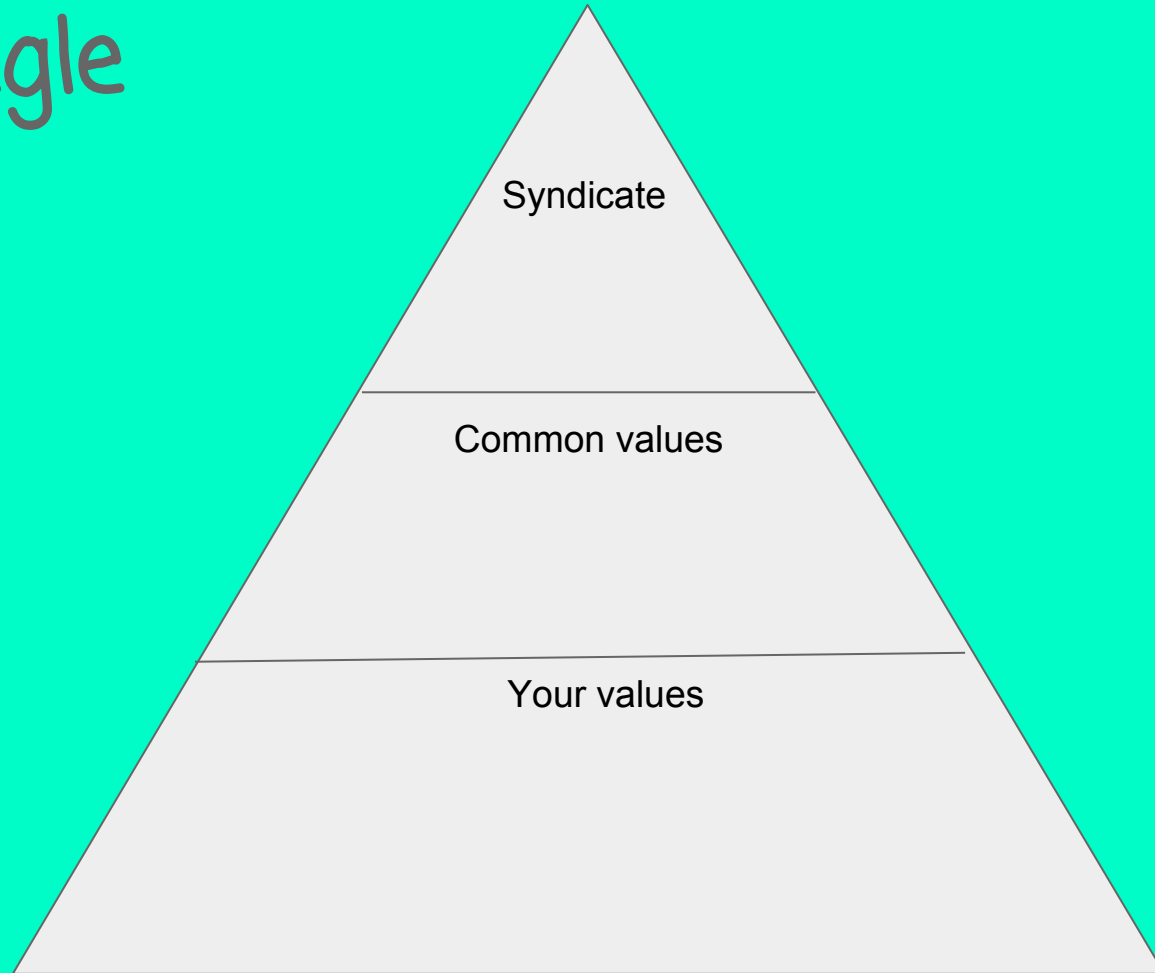
- What would you fight for?
- What are your non-compromises?



WAIKANAE SCHOOL VALUES

1. Spend a few minutes on your own brainstorming in the bottom section of the triangle some keywords or attributes that you think represent your values as a teacher.
2. Share your ideas with at least five other people. Write in the the middle section of the triangle the values that you have in common.
3. Discuss findings in new syndicate groups. Record the common denominators in the top section of the triangle.
4. Later we will look at the whole school's values and next term will run a similar process with the children to find their core values.

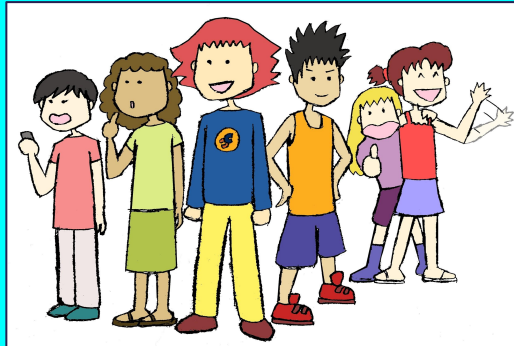
The Triangle



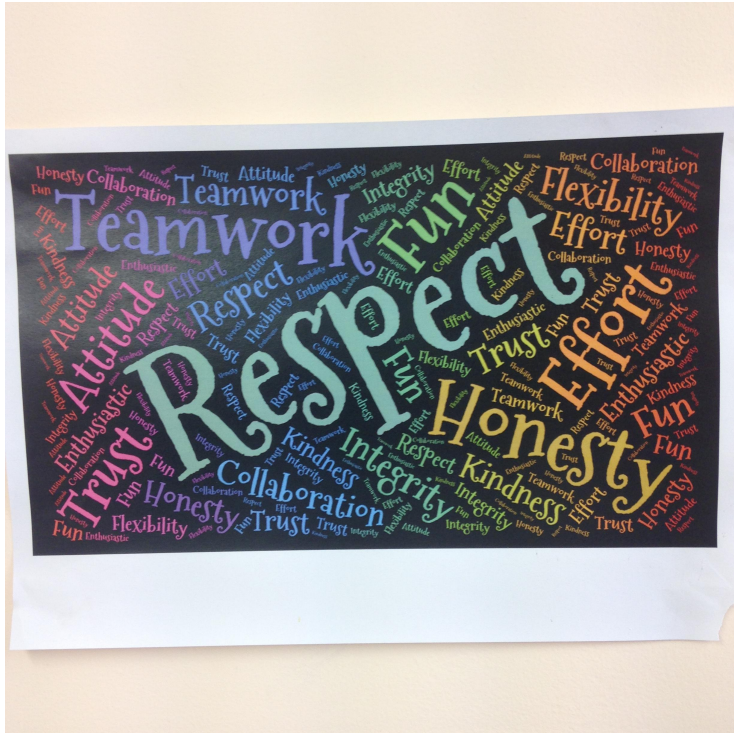
WHERE TO FROM HERE?

The values that we as a teaching team believe in helps to make us who we are as Waikanae School teachers.

Our next step is for the students to come up with their values.



WAIKANAE SCHOOL VALUES



Values




To be encouraged, modelled, and explored;

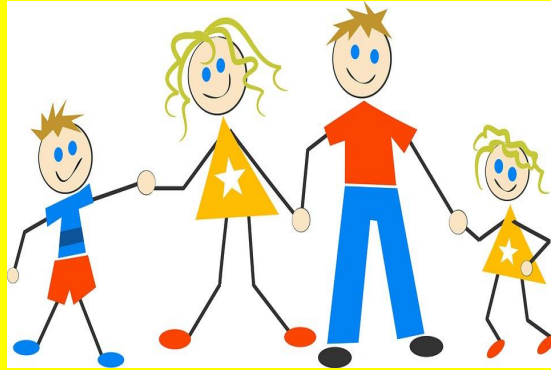
Values are deeply held beliefs about what is important or desirable. They are expressed through the ways in which people think and act.

The New Zealand Curriculum

HAVE A READ

EXPLORING VALUES WITH YOUR CLASS

Value	Looks Like	Sounds Like	Feels like
			
Kindness	Playing on the playground together	Laughing and talking	Happy heart



Our Values;

We will;

- **Be respectful**
- **Be kind to each other**
- **Keep our hands and feet to ourselves**
 - **Be friends**
 - **Try our best**

By Room 21

WHERE ARE WE AT?

Each class are at different stages of developing their class values.

By the end of the term (week 10) it would be great if each class could share their values within their syndicates.

We will combine all the values at our staff meeting in week 11.

Parents/ whanau / BOT and School Community will be invited to share their Values through a survey. . Their contributions will be combined with the teachers' and students' values.



WAIKANAE SCHOOL VALUES

